



2019-20 ALAMANCE COUNTY GOVERNMENT

NOTES



Alamance County

Committed to Good Government

Mission

Alamance County effectively provides its citizens with high quality public services, the tools for successful economic development, and a responsive, transparent government that supports the community as the preferred place to live, work, and play.

Vision

Alamance County is a cohesive community with a thriving economy that balances respect for our rural history with thoughtful growth and development.

Core Values

Respect

We treat everyone with politeness, dignity, and compassion at all times.

Golden Rule

We treat others as we would like to be treated.
"Be Nice."

Honesty

We will be fair and straightforward, acting with integrity in all situations.

Commitment

We will serve the citizens of Alamance County with fairness and equity.

Accountability

We are responsible for all our actions and interactions with each other and the public.

Action Pillars

Preserving Agriculture

A vibrant, protected rural economy supporting locally owned and operated farms.

World Class Education

A commitment to world class education to encourage a prosperous community and individual success for all from cradle to career.

Smart Growth and Development

Planned growth that strikes a balance between a thriving economy and an appreciation of natural and agricultural resources.

Public Health and Safety

Develop and implement activities that provide for the well-being of all citizens in a responsive, respectful, and engaged manner.

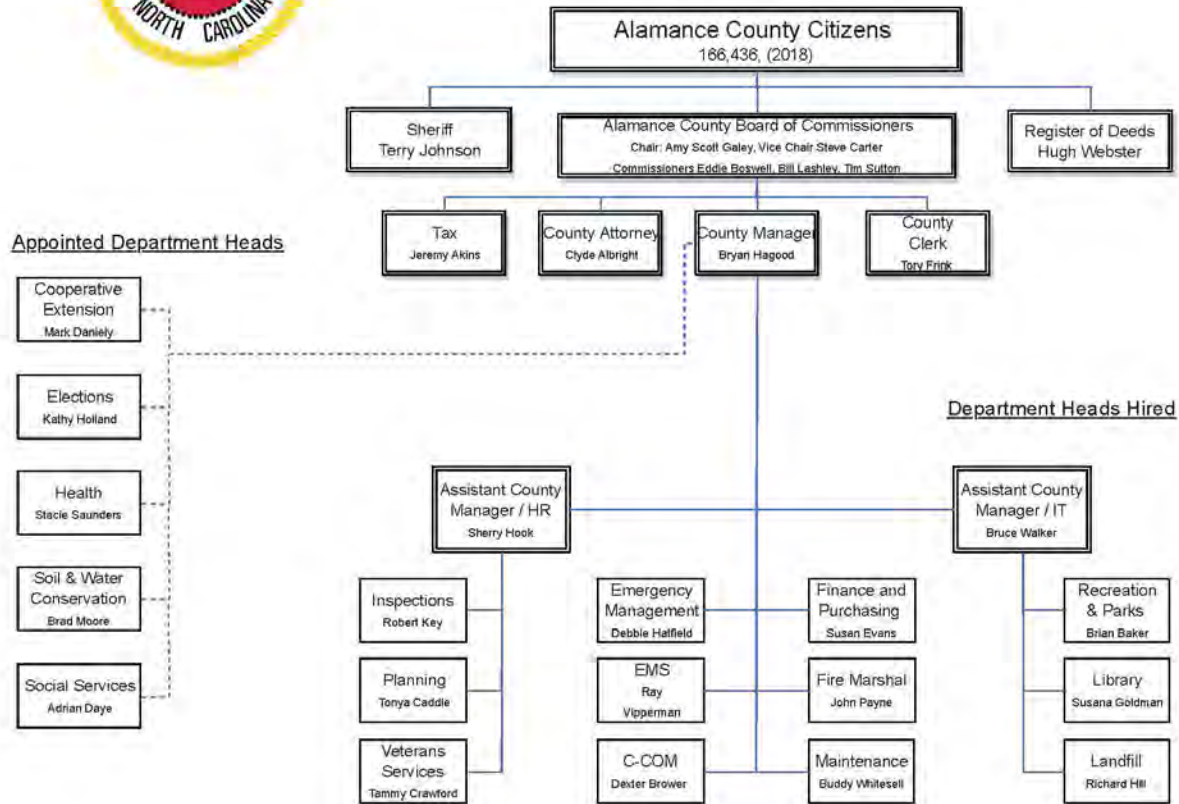
Government Accountability and Resource Management

A commitment to provide leadership through innovative and effective management. Promote trust by providing transparency, openness and appreciating citizen concerns.



ALAMANCE COUNTY

Organizational Chart



IN GOD WE TRUST



BOARD OF COMMISSIONERS

Top Row (L-R): Vice Chair Eddie Boswell, Commissioner Steve Carter

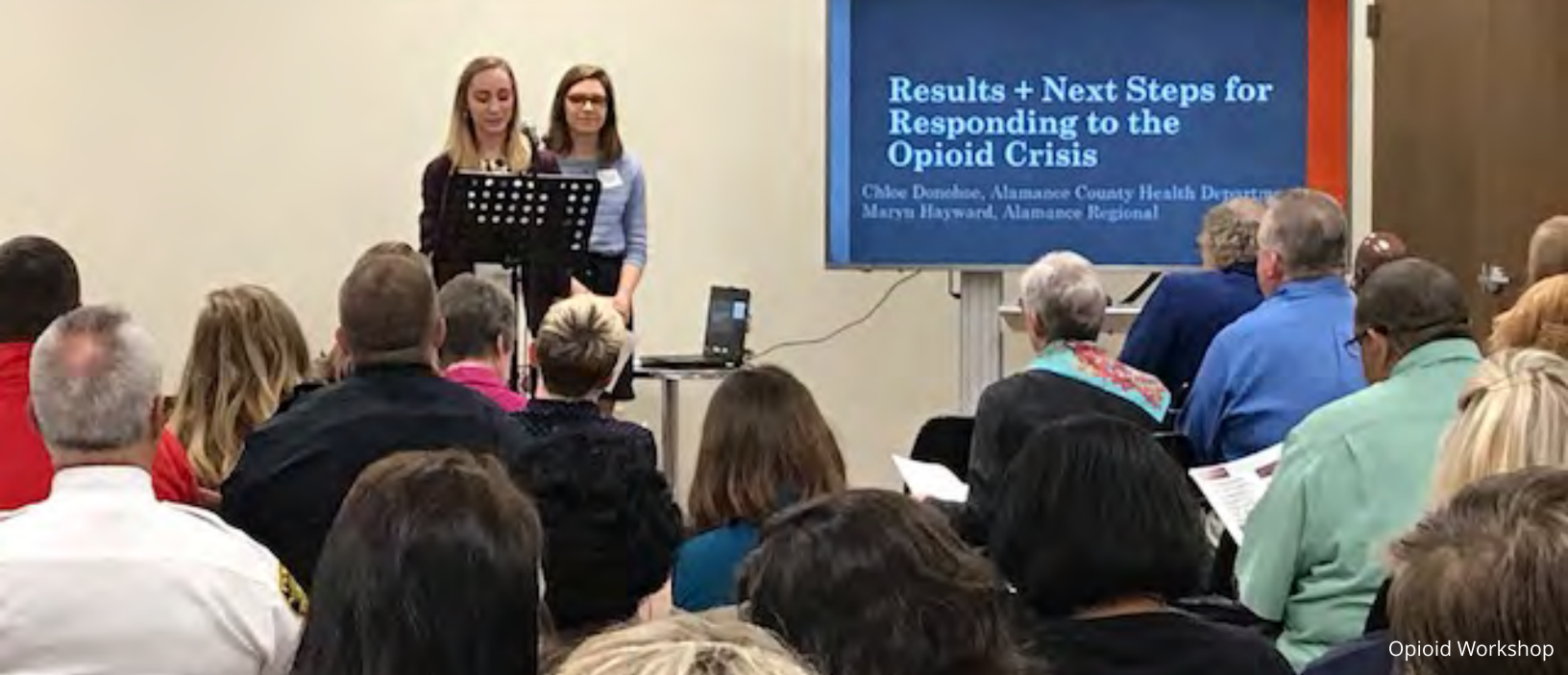
Bottom Row (L-R): Commissioner Bill Lashley, Chair Amy Scott Galey, Commissioner Tim Sutton

Board of Commissioners

The five-member Board of Commissioners is the governing body of Alamance County. All five Commissioners are elected at large to serve four-year staggered terms. Partisan elections are held in November of even numbered years. Each December, the Board elects its Chair and Vice Chair.

Board Responsibilities and Duties

- Adoption of the annual budget
- Establishment of the tax rate
- Appointment of County Manager as Chief Administrator
- Establishing and enacting local ordinances which are administered by the County Manager and his/her staff
- Appointment of representatives to boards and commissions



Opioid Workshop

TABLE OF CONTENTS

02	Board of Elections	16	Landfill
03	Central Communications	17	Legal
04	Cooperative Extension	18	Libraries
05	Emergency Management	19	Manager's Office
06	Emergency Medical Services	20	Parks
07	Facilities	21	Planning
08	Finance	22	Purchasing
09	Fire Marshal's Office	23	Register of Deeds
10	Geographic Information Systems	24	Sheriff's Office
11	Health	25	Social Services
13	Human Resources	26	Soil and Water Conservation
14	Inspections	27	Tax
15	Information Technology	28	Veterans Services



Photo credited to Scott Muthersbaugh / Times News

BOARD OF ELECTIONS

Board of Elections

The mission of the Alamance County Board of Elections is to conduct fair and impartial elections in an accurate and timely manner.

Department Information

Location

Alamance County Board of Elections
115 S. Maple St.
Graham, NC 27253

Director: Kathy Holland

Kathy.Holland@alamance-nc.com

Contact Information

336-570-6755

Adopted FY 2019-20 Budget

Personnel Costs	\$ 684,670
Operating Costs	243,292
Capital Outlay	0
Total Expenditures	\$ 927,962
Department Revenues	\$ 1,000
General Revenues	926,962
Total Revenues	\$ 927,962



911 CENTRAL COMMUNICATIONS

Central Communications

Central Communications process emergency and non-emergency calls for service for Alamance County and provides radio dispatch for County and Municipal Fire, Rescue, Law Enforcement, and Ambulance services (Burlington Police and Fire excluded).

Department Information

Location

Central Communications
124 W. Elm Street
Graham, NC 27253

Administration Non-Emergency Line
336-570-6777

Director: Stephen Sigmon

Stephen.Sigmon@alamance-nc.com

Hours of Operation

Communications: 24 Hours a day,
365 Days a year
Administration: 8am - 5pm (Monday - Friday)

Adopted FY 2019-20 Budget

Personnel Costs	\$ 2,164,345
Operating Costs	252,659
Capital Outlay	0
Total Expenditures	\$ 2,417,004
Dept. Revenues-Fees	\$ 375,460
General Revenues	2,041,544
Total Revenues	\$ 2,417,004



COOPERATIVE EXTENSION

Cooperative Extension

Alamance County Cooperative Extension provides research based programming tailored to helping citizens with their issues and needs. Specialized programs also teach citizens educational techniques and methods that assist in improving the quality of their lives. Programming includes: agricultural field crops, livestock, family and consumer sciences, natural resources, consumer horticulture, commercial horticulture and 4-H youth development.

Department Information

Location

Cooperative Extension
209-C N. Graham-Hopedale Rd.
Burlington, 27217

Director: Mark Danieleley

Mark.Danieley@alamance-nc.com

Hours of Operation

8am - 5pm (Monday - Friday)

Contact

336-570-6740
alamance.ces.ncsu.edu

Adopted FY 2019-20 Budget

Personnel Costs	\$	327,266
Operating Costs		40,014
Capital Outlay		0
Total Expenditures	\$	367,280
General Revenues	\$	367,280
Total Revenues	\$	367,280



EMERGENCY MANAGEMENT

Emergency Management

Alamance County Emergency Management is to formulate and test response and resource plans for various man-made and natural disasters that occur in our county. These could be tornadoes, winter storms, or transportation accidents on the interstate.

Department Information

Location
1950 Martin St.
Burlington, NC 27217

Contact
336-227-1365

Emergency Management Coordinator:
Debbie Hatfield
Debbie.Hatfield@alamance-nc.com

Adopted FY 2019-20 Budget

EMERGENCY MANAGEMENT

Personnel Costs	\$	93,561
Operating Costs		79,064
Capital Outlay		0
Total Expenditures	\$	172,625
Grant Revenues	\$	52,900
General Revenues		119,725
Total Revenues	\$	172,625

SARA MANAGEMENT

Personnel Costs	\$	129,656
Operating Costs		114,902
Capital Outlay		10,000
Total Expenditures	\$	254,558
Department Revenues	\$	254,558
General Revenues		0
Total Revenues	\$	254,558



EMERGENCY MEDICAL SERVICES

Emergency Medical Services

Alamance County EMS provides pre-hospital emergency care and transportation for the citizens and visitors of Alamance County. In addition to its emergency functions, EMS is also the sole provider of convalescent ambulance transportation within Alamance County.

Department Information

Location

296 E Crescent Square Dr
Graham, NC 27253

Contact

336-570-6796

EMS Director: Ray Vipperman

Ray.Vipperman@alamance-nc.com

Business Office Hours

8am - 5pm (Monday - Friday)

Adopted FY 2019-20 Budget

EMS

Personnel Costs	\$ 6,491,882
Operating Costs	1,319,257
Capital Outlay	350,000
Total Expenditures	\$ 8,161,139
Dept Revenues - Fees	\$ 5,046,000
General Revenues	3,115,139
Total Revenues	\$ 8,161,139

PARA-MEDICINE PROGRAM

Personnel Costs	\$ 68,874
Operating Costs	6,126
Total Expenditures	\$ 75,000
Grant Funds	\$ 75,000
Total Revenues	\$ 75,000



FACILITIES MANAGEMENT

Facilities

Facilities maintains all 40 buildings (approximately 578,000 sq. ft) and grounds to create a safe, comfortable, and efficient workplace. Staff responds to work order requests in a timely and effective manner, budgets and manages capital repair projects, and analyzes building operation data.

Department Information

Location

286 East Crescent Square Drive
Graham, NC 27253

Contact

336-570-6750

Facilities Director: Buddy Whitesell

Buddy.Whitesell@alamance-nc.com

Business Office Hours

8am - 5pm (Monday - Friday)

Adopted FY 2019-20 Budget

Personnel Costs	\$ 724,962
Operating Costs	1,400,787
Capital Outlay	20,000
Total Expenditures	\$ 2,145,749
Department Revenue	\$ 440
General Revenues	2,145,309
Total Revenues	\$ 2,145,749



Finance

Finance coordinates effective and prudent management of the County's financial resources in accordance with generally accepted accounting principles and NC State statutes, financial reporting, budget, accounts payable, payroll, investments, and purchasing.

Department Information

Location
124 West Elm Street
Graham, NC 27253

Contact
336-228-1312

Finance Officer: Susan Evans
Susan.Evans@alamance-nc.com

Business Office Hours
8am - 5pm (Monday - Friday)

Adopted FY 2019-20 Budget

Personnel Costs	\$ 660,251
Operating Costs	570,281
Capital Outlay	0
Total Expenditures	\$ 1,230,532
Department Revenues	\$ 28,750
General Revenues	1,201,782
Total Revenues	\$ 1,230,532



FIRE MARSHAL

Fire Marshal

Alamance County Fire Marshal's Office strives to maintain a county-wide presence through fire code enforcement, fire prevention, public education, and community service while responding in a timely manner to reported structure fires requiring investigation.

Department Information

Location

1950 Martin St.
Burlington, NC 27217

Contact

336-227-1365

Fire Marshal: John Payne

John.Payne@alamance-nc.com

Business Office Hours

8am - 5pm (Monday - Friday)

Adopted FY 2019-20 Budget

FIRE MARSHAL'S OFFICE

Personnel Costs	\$	367,014
Operating Costs		46,262
Capital Outlay		0
Total Expenditures	\$	413,276
Dept Revenues - Fees	\$	10,000
General Revenues		403,276
Total Revenues	\$	413,276

FIRE SERVICE

Personnel Costs	\$	0
Operating Costs		46,747
Total Expenditures	\$	46,747
General Revenues	\$	46,747
Total Revenues	\$	46,747



GIS Staff

GEOGRAPHIC INFORMATION SYSTEMS

GIS

The GIS Department’s core service to the public is providing access to a wide range of geospatial data to aid informed decision-making. GIS creates/maintains a multitude of GIS layers for addressing information and public safety as well as supporting tax and government departments in order to respond quickly and efficiently to various long and short range spatial projects.

Department Information

Location
124 W. Elm St.
Graham, NC 27253

Contact
336-570-4102

GIS Director: Marlena Isley
Marlena.Isley@alamance-nc.com

Business Office Hours
8am - 5pm (Monday - Friday)

Adopted FY 2019-20 Budget

Personnel Costs	\$	224,798
Operating Costs		63,311
Capital Outlay		0
Total Expenditures	\$	288,109
General Revenues	\$	288,109
Total Revenues	\$	288,109



Breastfeeding Friendly Business Awardees

HEALTH

Health

The Health Department provides core public health services, such as communicable disease monitoring and prevention, to protect and improve the health of Alamance County. In addition, the Health Department provides clinical services including: family planning, prenatal care, child health, communicable disease, behavioral health and immunizations, and health education and outreach. It also provides food inspections and on-site well and wastewater, nutrition education and counseling, and children's dental services.

Department Information

Location

319 N. Graham-Hopedale Rd.
Burlington, NC 27217

Contact

336-227-0101

Health Director: Stacie Saunders

Stacie.Saunders@alamance-nc.com

Business Office Hours

8am - 5pm (Monday - Friday)

Adopted FY 2019-20 Budget

Personnel Costs	\$ 6,060,704
Operating Costs	1,628,271
Program Costs	494,861
Capital Outlay	0
Total Expenditures	\$ 8,183,836
Department Revenues-Fees	\$ 1,343,593
State/Federal Grant Revenues	1,841,610
Grant Revenues	22,956
General Revenues	4,975,677
Total Revenues	\$ 8,183,836



HEALTH

DENTAL CLINIC BUDGET

Personnel Costs	\$	847,597
Operating Costs		345,125
Capital Outlay		0
Total Expenditures	\$	1,192,722
Department Revenues	\$	1,192,722
General Revenues	\$	1,192,722

WIC BUDGET

Personnel Costs	\$	759,986
Operating Costs		21,324
Capital Outlay		0
Total Expenditures	\$	781,310
Department Revenues	\$	781,310
Total Revenues	\$	781,310



HUMAN RESOURCES

HR

HR provides position classification and pay plan services, coordinates employee recruitment and selection, administers employee benefits, oversees employee relations, and ensures compliance with employment law and OSHA safety standards.

Department Information

Location

124 West Elm Street
Graham, NC 27253

Contact

336-570-4034

HR Director: Sherry Hook

Sherry.Hook@alamance-nc.com

Business Office Hours

8am - 5pm (Monday - Friday)

Adopted FY 2019-20 Budget

Personnel Costs	\$	558,842
Operating Costs		140,521
Capital Outlay		0
Total Expenditures	\$	699,363
General Revenues	\$	699,363
Total Revenues	\$	699,363



INSPECTIONS

Inspections

Inspections administers and enforces NC technical codes. It also receives and processes permit applications and issues orders to correct violations.

Department Information

Location

201 West Elm Street
Graham NC, 27253

Contact

336-570-4057

Inspections Director: Robert Key

Robert.Key@alamance-nc.com

Business Office Hours

8am - 5pm (Monday - Friday)

Adopted FY 2019-20 Budget

Personnel Costs	\$	835,079
Operating Costs		45,332
Capital Outlay		0
Total Expenditures	\$	880,411
Dept Revenues - Fees	\$	825,000
General Revenues		55,411
Total Revenues	\$	880,411



IT

The IT department serves the technology needs of county departments, their tech communication with the public, safely secures all county technology, requires compliance with Federal & State rules/audits, and backups all county data. IT has gone from ordering, connecting, backing up, configuring wired desktop PCs and servers, to a department that must now also research, fully secure, maintain, replicate, connect, install and support hundreds of programs and applications on smart devices, cameras, mobile devices, PCs, and virtualized servers which are connected through wires, Wi-Fi, cell towers, our internal network and the cloud. Plus we communicate to our citizens in new ways through social media and the web, retain years of vital records, and put in even more sophisticated safeguards to keep hackers at bay.

Department Information

Location
 124 West Elm Street
 Graham, NC 27253

Contact
 336-228-1312

IT Director: Bruce Walker
 Bruce.Walker@alamance-nc.com

Business Office Hours
 8am - 5pm (Monday - Friday)

Adopted FY 2019-20 Budget

IT BUDGET

Personnel Costs	\$ 1,580,897
Operating Costs	2,128,804
Capital Outlay	0
Total Expenditures	\$ 3,709,701
General Revenues	\$ 3,709,701
Total Revenues	\$ 3,709,701

PRINT SHOP BUDGET

Personnel Costs	\$ 53,623
Operating Costs	32,540
Capital Outlay	0
Total Expenditures	\$ 86,163
Department Revenue	\$ 1,500
General Revenues	84,663
Total Revenues	\$ 86,163



LANDFILL

Landfill

The Landfill Department provides waste disposal services for the county's industrial, commercial, and residential sectors. It receives yard waste, scrap tires, white goods, and recyclables and provides for proper disposal as well as enforces the county's solid waste and recycling ordinances. It also manages contracts related to waste and recycling franchises.

Department Information

Location

2701 Austin Quarter Road
Graham, NC 27253

Contact

336-376-8902

Landfill Director: Richard Hill

Richard.Hill@alamance-nc.com

For Landfill and Recycling hours, please visit

www.alamance-nc.com/landfill/

Adopted FY 2019-20 Budget

Personnel Costs	\$ 1,363,006
Operating Costs	1,947,821
Capital Outlay	614,000
Allocation for Post Closure Cost	570,554
Future Development	326,619
Contingency	100,000
Total Expenditures	\$ 4,922,000
Dept Revenues - Fees	\$ 4,922,000
Total Revenues	\$ 4,922,000



Legal Staff

Legal

The Legal Department serves as in-house counsel and trial counsel for the Board of Commissioners, the Sheriff, and Departments, collects taxes through payment plans and tax foreclosure sale, reviews contracts agreements, and responds to public records requests.

Department Information

Location
 124 West Elm Street
 Graham, NC 27253

Contact
 336-228-1312

County Attorney: Clyde Albright
 Clyde.Albright@alamance-nc.com

Business Office Hours
 8am - 5pm (Monday - Friday)

Adopted FY 2019-20 Budget

Personnel Costs	\$	332,856
Operating Costs		85,715
Capital Outlay		0
Total Expenditures	\$	418,571
Department Revenues - Fees and Judgments	\$	5,000
General Revenues		413,571
Total Revenues	\$	418,571



Libraries

Alamance County Public Libraries connect information and resources to all members of our community. Our programs and services are designed to address literacy and to educate in an effort to improve quality of life.

Department Information

Location

May Memorial Library
342 South Spring Street
Burlington, NC 27215

Director: Susana Goldman

Susana.Goldman@alamance-nc.com

Contact

336-229-3588

For library locations and hours, please visit
www.alamancelibraries.org

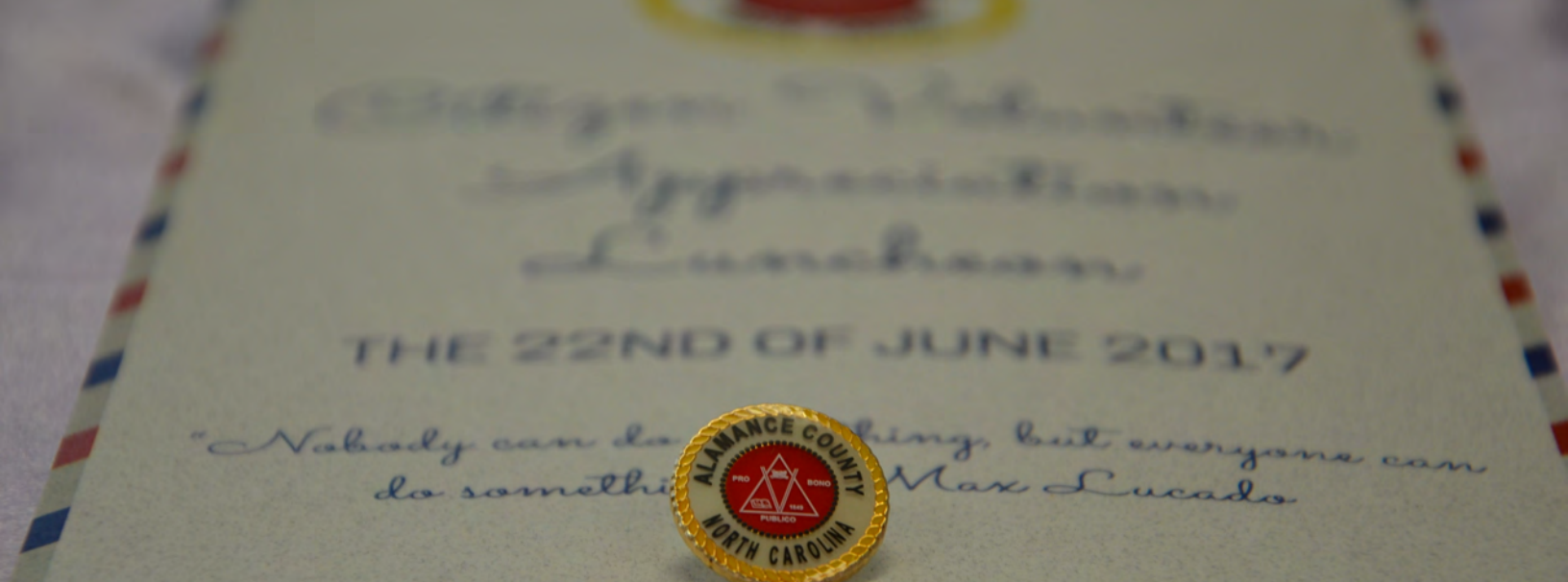
Adopted FY 2019-20 Budget

ALAMANCE LIBRARIES

Personnel Costs	\$	2,316,659
Operating Costs		423,096
Capital Outlay - Library Materials		245,000
Total Expenditures	\$	3,022,755
Department Revenues	\$	153,000
Grant Revenues		180,887
General Revenues		2,688,868
Total Revenues	\$	3,022,755

NORTH PARK

Personnel Costs	\$	63,031
Operating Cost		10,000
Total Expenditures	\$	73,031
Grant Revenues	\$	10,000
General Revenues		63,031
Total Revenues	\$	73,031



MANAGER'S OFFICE

Manager's Office

The Manager's Office coordinates and implements the Board of Commissioners' policies and directives, prepares and submits an annual budget and capital plan, assesses provision of County services to ensure quality and efficiency and works with economic development efforts.

Department Information

Location

124 West Elm Street
Graham, NC 27253

Contact

336-228-1312

County Manager: Bryan Hagood

Bryan.Hagood@alamance-nc.com

Business Office Hours

8am - 5pm (Monday - Friday)

Adopted FY 2019-20 Budget

Personnel Costs	\$	497,588
Merit Plan		462,541
Operating Costs		78,375
Unemployment Insurance		140,000
Health Insurance - Retirees		2,007,600
Capital Outlay		0
Total Expenditures	\$	3,186,104
Dept Revenues	\$	204,893
Grant Revenues		25,000
Designated Fund/MH Retirees		29,652
General Revenues		2,924,529
Total Revenues	\$	3,186,104



Saxapahaw - Photo Credit Ron King

ALAMANCE PARKS

Parks

Alamance Parks works to improve the quality of life of Alamance County residents. Through our parks and programs, we encourage healthy lifestyles for children and adults, provide inclusive activities for all citizens, and provide access to the natural world.

Department Information

Location

3916 R. Dean Coleman Road,
Burlington, North Carolina 27215

Contact

(336) 229-2410

Parks Director: Brian Baker

Brian.Baker@alamance-nc.com

For Park Hours, please visit

www.alamanceparks.com

Adopted FY 2019-20 Budget

Personnel Costs	\$ 1,361,567
Operating Costs	645,709
Capital Outlay	28,500
Total Expenditures	\$ 2,035,776
Department Revenues	66,100
Occupancy Tax (Textile Museum)	81,214
Designated Occupancy Tax	46,000
General Revenues	1,842,462
Total Revenues	\$ 2,035,776



Planning

Planning oversees land development, code enforcement, historic property issues, and community development activities in the unincorporated portions of the County, provides assistance for various grant programs and special projects as needed, and works closely with many other county and municipal departments to ensure compliance with regulations and ordinances applicable in our jurisdiction.

Department Information

Location
201 W. Elm St.
Graham, NC 27253

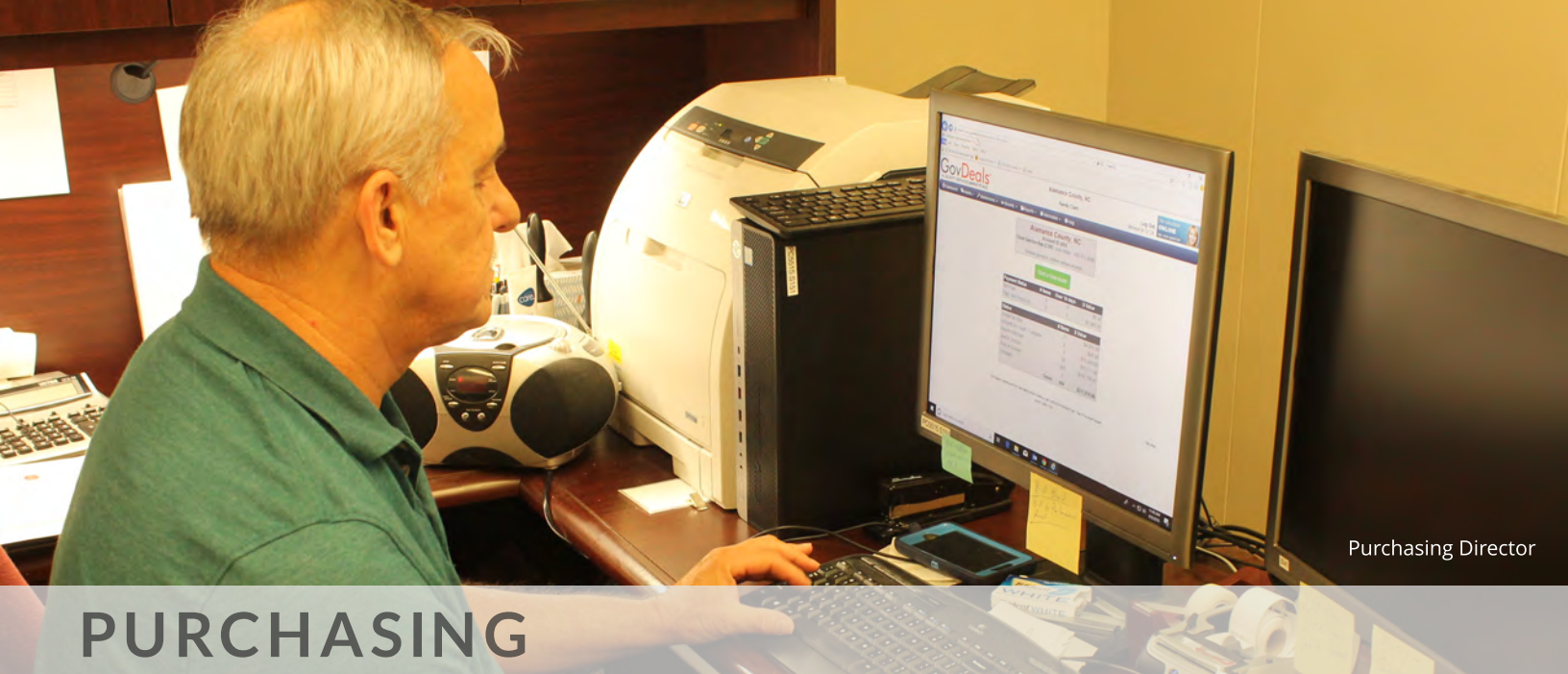
Contact
336-570-4052

Planning Director: Tonya Caddle
planning@alamance-nc.com

Business Office Hours
8am - 5pm (Monday - Friday)

Adopted FY 2019-20 Budget

Personnel Costs	\$	205,501
Operating Costs		34,517
Capital Outlay		0
Total Expenditures	\$	240,018
Dept. Revenues-Fees	\$	23,300
General Revenues		216,718
Total Revenues	\$	240,018



PURCHASING

Purchasing

The Purchasing Department is the central buying office responsible for making general purchases of products, goods, and services required by all departments within Alamance County. The department is also responsible for reviewing all contracts for compliance with applicable laws and ordinances to ensure competitive pricing, fairness, and good stewardship of public funds.

Department Information

Location

124 West Elm Street
Graham, NC 27253

Contact

336-570-4072

Purchasing Director: Randy Clark

Randy.Clark@alamance-nc.com

Business Office Hours

8am - 5pm (Monday - Friday)

Adopted FY 2019-20 Budget

Personnel Costs	\$	85,177
Operating Costs		4,990
Capital Outlay		0
Total Expenditures	\$	90,167
General Revenues	\$	90,167
Total Revenues	\$	90,167



REGISTER OF DEEDS

Register of Deeds

The Register of Deeds Office serves the citizens of Alamance County by recording, safeguarding, managing, and providing access to the public records of the County according to the General Statutes of North Carolina.

Department Information

Location

118 West Harden Street
Graham, NC 27253

Contact

336-570-6565

Register of Deeds: Hugh Webster

hwebster@alamancerod.org

Business Office Hours

8am - 5pm (Monday - Friday)
(service for recording and marriage licenses end at 4:30pm)

Adopted FY 2019-20 Budget

Personnel Costs	\$ 627,737
Operating Costs	246,878
Capital Outlay	0
Total Expenditures	\$ 874,615
Dept. Revenues-Fees	\$ 680,000
Automation Funds	100,000
General Revenues	94,615
Total Revenues	\$ 874,615



National Police Week 2019

SHERIFF'S OFFICE

Sheriff's Office

The Sheriff's Department provides law enforcement services and protection, secures courts and serves criminal and civil process papers, and operates the jail facility. It also provides custody, security, care, feeding and medical welfare of inmates, as well as provides animal control services.

Department Information

Location

109 South Maple Street
Graham, NC 27253

Contact

336-570-6300

Sheriff: Terry S. Johnson

ACSO-Contact@alamance-nc.com

Business Office Hours

8am - 5pm (Monday - Friday)

Adopted FY 2019-20 Budget

SHERIFF'S OFFICE BUDGET

Personnel Costs	\$ 10,619,490
Operating Costs	1,712,952
Capital Outlay	468,000
Total Expenditures	\$ 12,800,442
Dept. Revenues - Fees	\$ 637,000
General Revenues	12,163,442
Total Revenues	\$ 12,800,442

JAIL BUDGET

Personnel Costs	\$ 8,155,358
Operating Costs	3,051,318
Capital Outlay	0
Total Expenditures	\$ 11,206,676
Dept. Revenues - Fees	\$ 1,843,000
General Revenues	9,363,676
Total Revenues	\$ 11,206,676



Ring Out Against Child Abuse

SOCIAL SERVICES

DSS

The Alamance County DSS budget funds more than 28 mandated state and federal programs as well as vital additional services such as Fraud Investigations, the Family Justice Center, and Domestic Violence Male Batterer's Treatment. There are three main focus areas within DSS that include family, children, and adult services.

Department Information

Location

319 North Graham-Hopedale Road
 Burlington, NC 27217

Contact

336-570-6532

DSS Director: Adrian Daye

Adrian.Daye@alamance-nc.com

Business Office Hours

8am - 5pm (Monday - Friday)

Adopted FY 2019-20 Budget

DSS BUDGET

Personnel Costs	\$ 14,076,718
Operating Costs	1,241,316
Program Costs	4,255,179
Capital Outlay	0
Total Expenditures	\$ 19,573,213
Department Revenue	\$ 168,584
Federal and State Revenues	11,038,041
General Revenues	8,366,588
Total Revenues	\$ 19,573,213

FAMILY JUSTICE CENTER BUDGET

Personnel Costs	\$ 159,724
Operating Costs	198,069
Capital Outlay	12,000
Total Expenditures	\$ 369,793
Grant Revenues	\$ 369,793
Total Revenues	\$ 369,793



SOIL AND WATER

Soil and Water

Soil and Water provides leadership to residents in conservation and assists with planning, designing, and installing conservation measures. It provides animal waste management assistance as well as sponsors and develops educational programs.

Department Information

Location

209 N Graham Hopedale Rd.
Burlington, NC 27217

Contact

336-290-0380

Soil and Water Director: Brad Moore

Brad.Moore@alamance-nc.com

Business Office Hours

8am - 5pm (Monday - Friday)

Adopted FY 2019-20 Budget

Personnel Costs	\$ 229,510
Operating Costs	16,103
Capital Outlay	0
Piedmont Conservation Council	3,000
Developmental Rights	150,000
Total Expenditures	\$ 398,613
Department Fees	\$ 4,100
Grant Revenues	26,100
General Revenues	368,413
Total Revenues	\$ 398,613



TAX

Tax

The Tax Department values all real and personal property for taxes (in keeping with North Carolina law), bills and collects those taxes, and provides information and assistance to our citizens.

Department Information

Location

124 West Elm Street
Graham, NC 27253

Contact

336-228-1312

Tax Administrator: Jeremy Akins

Jeremy.Akins@alamance-nc.com

Business Office Hours

8am - 5pm (Monday - Friday)

Adopted FY 2019-20 Budget

Personnel Costs	\$ 1,679,116
Operating Costs	770,850
Capital Outlay	0
Total Expenditures	\$ 2,449,966
Dept. Revenues-Fees	\$ 132,000
General Revenues	2,317,966
Total Revenues	\$ 2,449,966

REVALUATION

Revaluation Costs	\$ 210,909
Total Expenditures	\$ 210,909
General Revenues	\$ 210,909



Veterans Services Staff

Veterans Services

Veterans Services assists veterans and dependents with benefits as well as filing service connected disabilities, non-service pension claims, medical, burial, and vocational rehabilitation claims, VA appeals, and NC benefits. This department orders Department of Defense records, assists with medical bills, orders medical records and helps to promote education and home loans.

Department Information

Location

201 West Elm Street
Graham, NC 27253

Contact

336-570-6763

Veterans Services Director: Tammy Crawford

Tammy.Crawford@alamance-nc.com

Business Office Hours

8am - 5pm (Monday - Friday)

Adopted FY 2019-20 Budget

Personnel Costs	\$	194,091
Operating Costs		24,719
Capital Outlay		0
Total Expenditures	\$	218,810
Department Revenues	\$	0
General Revenues		218,810
Total Revenues	\$	218,810

ALAMANCE COUNTY
124 W. ELM STREET
GRAHAM, NC 27253

WWW.ALAMANCE-NC.COM