

Alamance Parks Annual Report 2016-2017

QUICK FACTS



1,220 Acres
Managed



314 Programs
and Events



\$724,774 in
Grants, Donations,
& Sponsorships



301
Facility Rentals



Special Olympics
Alamance County:
8 sports
400 athletes



Youth
Athletics:
750 games



HIGHLIGHTS

■ CEDAROCK PARK EQUESTRIAN CENTER

Phase I construction of Cedarrock Park's new Equestrian Center is complete. The new dedicated equestrian entrance is completed with a gravel loop drive, trailer parking, and entrance sign. Four equestrian campsites loop off from the main drive.

■ CVB JOINED COUNTY RECREATION & PARKS DPT

The Burlington/Alamance County Convention & Visitors Bureau joined the County as part of the Recreation & Parks Department. The CVB is responsible for increasing the economic impact of tourism in Alamance County.

■ SWEPSONVILLE RIVER PARK

Alamance Parks assumed management of Swepsonville River Park, one of the oldest parks on the Haw River Trail. Initial enhancements have been made to both park accesses with improved parking, fencing, trail marking, and restroom facilities.

■ ELI WHITNEY DOG PARK

Alamance Parks opened a new dog park at Eli Whitney Community Center. The unused fenced field was converted into a dog park with new signage and improved landscaping.

■ NEW TEE PADS ON CEDAROCK DISC GOLF COURSE

Alamance Parks staff repoured the concrete tee pads on all 18 holes of the Cedarrock Disc Golf Course (the "open course"). Repairs were made to various areas as necessary.

569,297
People
Visited
Alamance
Parks in
2016-2017



Looking Ahead



CEDAROCK PARK EQUESTRIAN CENTER

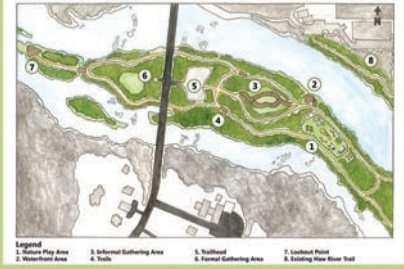
Cedarock Park will continue with Phase II construction of the new Equestrian Center with the addition of restrooms, stables, and a riding ring. The dedicated entrance and camping pads will open in 2017. A new mile of trail opened in 2016 connecting the Center to the existing bridle trail. The future stables will allow Cedarock Park to offer guided trail rides to the public.

SAXAPAHAW ISLAND PARK

Alamance Parks will open a new park in the heart of Saxapahaw as part of the Haw River Trail network.

Saxapahaw Island Park will offer hiking trails, gathering spaces, and an innovative Nature Play Area with multiple play nodes. The park will open in 2018.

Saxapahaw Island Park



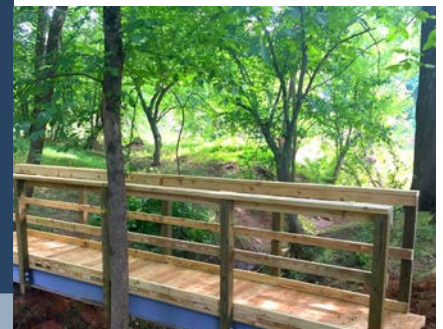
CANE CREEK MOUNTAINS NATURAL AREA

Plans are moving forward for Cane Creek Mountains Natural Area, a new passive use nature park that will provide public access to the County's largest state-significant natural heritage area. Alamance Parks received a grant to purchase an additional 366 acres of land. This future park will be 400+ acres and provide over 8 miles of hiking trail.

NEW SAXAPAHAW SECTION OF HAW RIVER TRAIL

A new trailhead will be constructed on Saxapahaw Island as well as 4 new miles of Haw River Land Trail.

The trail will include a loop around the Island and mileage both north and south of the Island. The new trail is slated to open in early 2018.



PLEASANT GROVE COMMUNITY CENTER WALKING TRAIL

Alamance Parks is constructing a new trail at Pleasant Grove Community Center. The project, funded by a grant from Impact Alamance, will provide a mile of surfaced, family-friendly walking trail that connects to the existing walking track.