

# Alamance County Strategic Plan

# COMMUNITY FORUMS

Please join us for our public forums. Lend your voice to the Strategic Plan!

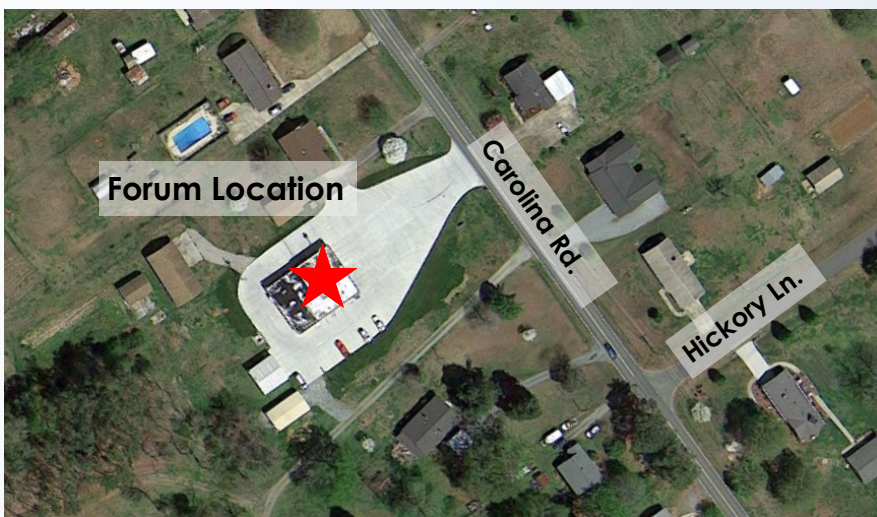
These forums provide an opportunity to help staff identify and prioritize your County vision. Help us continue to put your priorities first.

For more information, please visit our website:  
<http://www.alamance-nc.com/strategicplan/>

Or follow us on Facebook:  
<https://www.facebook.com/AlamanceCountyStrategicPlan>

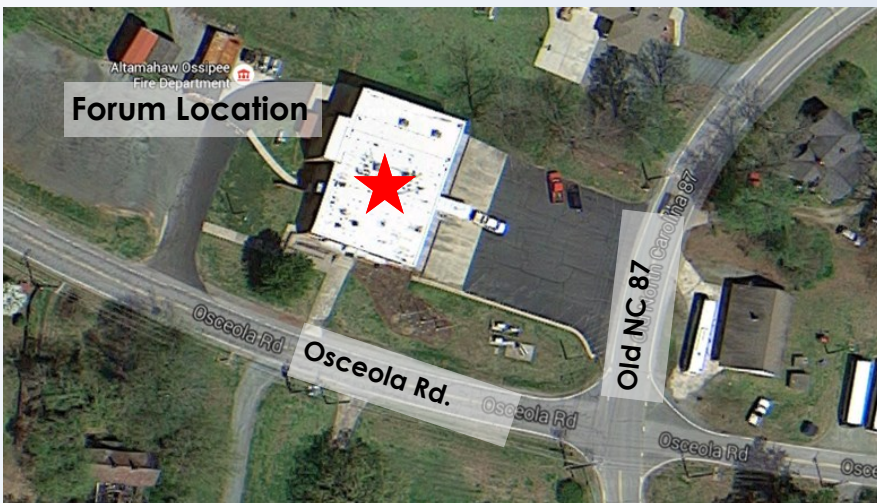


Organized by the Alamance County  
Planning Department  
336-570-4053  
Planning@alamance-nc.com



**January 25, 2016, 6pm**

Faucette Fire Station  
2164 Carolina Rd.  
Burlington, NC 27217



**February 4, 2016, 6pm**

Altamahaw-Ossipee Fire Station  
2806 N North Carolina Hwy 87  
Elon, NC 27244



**February 8, 2016, 6pm**

Elon Fire Station  
219 S. Williamson Ave.  
Elon, NC 27244



**February 18, 2016, 6pm**

Swepsonville Fire Station  
2744 Darrell Newton Dr.  
Graham, NC 27253 (Swepsonville)